

Newsletter

NADLEH WHUT'EN NEWSLETTER

MAY 17TH, 2023

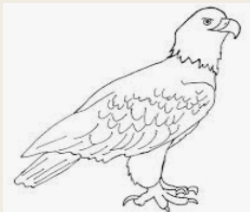


Nellie Nooski turns 93 years old. Pic by Johnny Ketlo.

1

CONTEST INSIDE!

Find the Sbalyan and get a chance to win a 50 dollar gift certificate from Nadleh store.



2

ELDER INTERVIEW

Check out this new video on Memory Keepers & Storytellers Youtube Channel with late

Bryan Ketlo.

5

COMMS

The ground breaking Ceremony for the New outdoor Skating

Rink takes place!

16

EDUCATION

Ground penetrating Radar course now available for Indigenous Communities.



Bryan Ketlo Smokehouse. Nadleh Elder Interview.



MEMORY KEEPERS & STORYTELLERS
90 subscribers

Subscribed

Like 1 Comment Share Download Clip Save



Bryan Ketlo Smokehouse. Nadleh Elder Interview.



MEMORY KEEPERS & STORYTELLERS
90 subscribers

Subscribed

Like 1 Comment Share Download Clip Save

NEW TELUS PURE FIBRE TO FAST INTERNET TO BE INSTALLED IN NADLEH THIS SUMMER! MORE DETAILS IN A VIDEO ON THE NADLEH WHUT'EN BULLETIN BOARD FACEBOOK PAGE!



TELUS PureFibre.
Internet reimagined.



nadleh.com

All Videos News Images Shopping More

Tools

CHECK OUT NADLEH.COM FOR NEWS AND JOBS! A LOT OF JOBS ON THE HOMEPAGE!

About 34,400 results (0.58 seconds)

Nadleh Whut'en
https://www.nadleh.com

Nadleh Whut'en: Events Schooling Training Culture Language

At Nadleh Whuten, we're dedicated to enhancing the lives of residents in the community with our wide range of activities and programs. Our programs have been ...

You've visited this page many times. Last visit: 05/05/23

Chief and Council

Residential School Projects Manager · Newsletters & Reports.

Contact

Nadleh Whut'enne Yah is your community center.

Administration

As the Financial Officer for our First Nations Band Office, I am ...

Health Centre

NADLEH HEALTH CENTER. HADIH NADLEH: . The ...



Nadleh Whut'en Administrative Offices

Directions Save Call

Tribal headquarters in Fort Fraser, British Columbia

Address: 1416 Nautley Rd, Fort Fraser, BC V0J 1N0

Phone: (250) 690-7211

Province: British Columbia

Suggest an edit · Own this business?



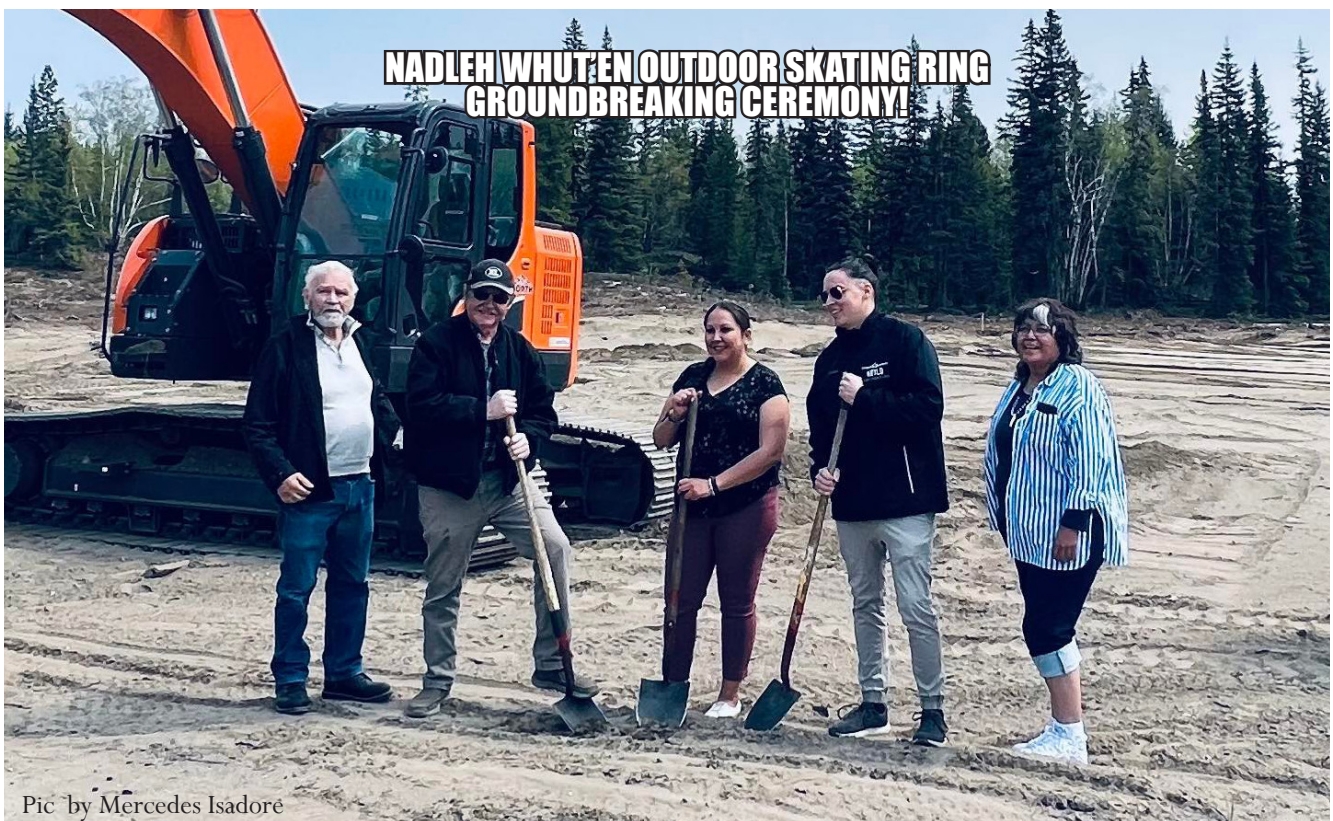
Congratulations to Sue Ketlo!



**Happy retirement after 25 years
of service as the Nadlel Whut'en
Education Coordinator**



Pics by Johnny Ketlo



CHECK OUT THE NADLEH WHUT'EN BULLETIN BOARD ON FACEBOOK TO GET THE LATEST REPORTS!

Nadleh Whut'en Bulletin Board
159 likes • 189 followers

Learn More Liked Message

Posts About Mentions Followers Photos Videos More

Switch into Nadleh Whut'en Bulletin Board's Page to start managing it. [Switch Now](#)

Intro
Information about your community.

- Page · News & media website
- [nadleh.com](#)
- [Promote Website](#)
- [Send message](#)
Typically replies in days

Posts

Nadleh Whut'en Bulletin Board
17h · 🌐

Ground breaking Ceremony happened today! Check it out here:

0:39 / 3:14

Boost this post to reach up to 1242 more people if you spend CA\$35. [Boost post](#)

You, Kathleen George, Trevor Ketlo and 35 others
2 comments 22 shares

Like Comment Share

View more comments

Alicia DeSousa
Awwwww inb everyone 🥰

Photos See all photos

SCIENCE COLLECTS DATA ON CULTURAL BURIALS...
GENUUS CULTURAL BURIALS IN BRITISH COLUMBIA & WESTERN SCIENCE PERSPECTIVE
BIRTHDAY PARTY
TELUS PureFibre



INDIGENOUS CULTURAL BURNING IN BRITISH COLUMBIA

A WESTERN SCIENCE PERSPECTIVE



Don Gayton, M.Sc, P.Ag(ret)
Consulting Ecologist
Summerland, BC
www.dongayton.ca

**WESTERN SCIENCE COLLECTS DATA ON CULTURAL BURNS USING
DENDROCHRONOLOGY AND TREE FIRE SCARS.**

“DENDROPYROCHRONOLOGY”

**FIRE SCARS CAN TELL US THE YEAR—AND SOMETIMES THE SEASON—THAT FIRES OCCURRED.
FIRE SCAR RECORDS IN BC INTERIOR END AROUND 1700, SINCE FEW TREES LIVE LONGER
THAN THAT.**



SOME FOOD PLANTS ENHANCED BY CULTURAL BURNING

Arrowleaf balsamroot
Bitterroot
Blueberry (several species)
Camas (2 species)
Chocolate lily
Columbia lily
Huckleberry (several species)
Mountain ash fruits
Pacific crabapple
Raspberry (several species)
Rose hips
Saskatoon
Spring beauty
Wild onion
Wild strawberry
Yellow glacier lily



MOTIVES FOR INDIGENOUS CULTURAL BURNING

(no particular order)

- **Enhance forage for elk, moose, deer, sheep, goats**
- **Enhance forage for horses (beginning early 1700s)**
- **Reduce forest encroachment into grasslands**
- **Enhance root, berry and medicinal plants**
- **Enhance certain plants for basketry etc.**
- **Maintain trails**
- **Reduce insect populations (mosquitoes, blackflies, ticks)**
- **Enhance visibility of game, and unfriendly neighbors**
- **Reduce risk of intense wildfire**
- **Enhance beaver, muskrat, river otter habitat in riparian areas**
- **Ceremonies**
- **Other**





Pics by Travis Ketlo

CONGRATULATIONS TO NELLIE NOOSKIWHO TURNED 93 YEARS OLD RECENTLY!
NADLEH GATHERED TO CELEBRATE IN HONOUR OF HER REMARKABLE
LIFE AND JOURNEY!



Pics by Johnny Ketlo

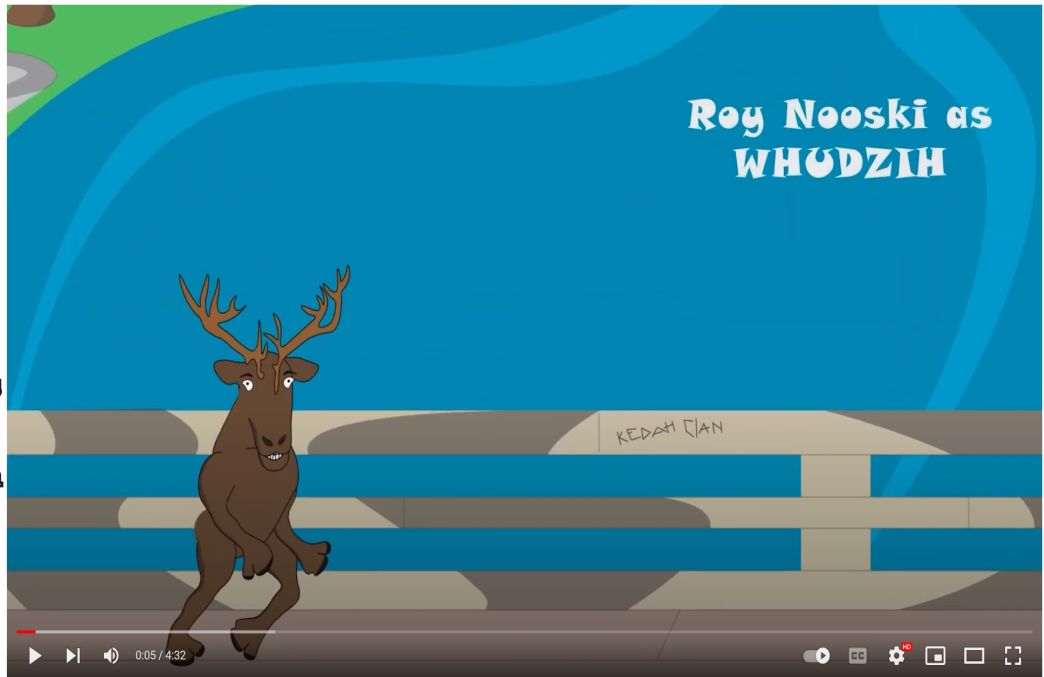




Search



In this animated short, on the Memory Keepers & Storytellers Youtube Channel, we have Roy Nooski play the character Whudzih (Caribou). He tells about growing up in Nadleh Whut'en and some funny anecdotes about his Grandfather. This also features a New song sung by Theresa Nooski



Whudzih the Caribou. Elder Story.



MEMORY KEEPERS & STORYTELLERS
90 subscribers

Analytics

Edit video

1



Share

Download

Clip

Save



which is the Lahal Song. Animation, Music Engineering and Art put together by Johnny Ketlo.





Shunultus OFFICIAL LYRIC VIDEO Tsewudina

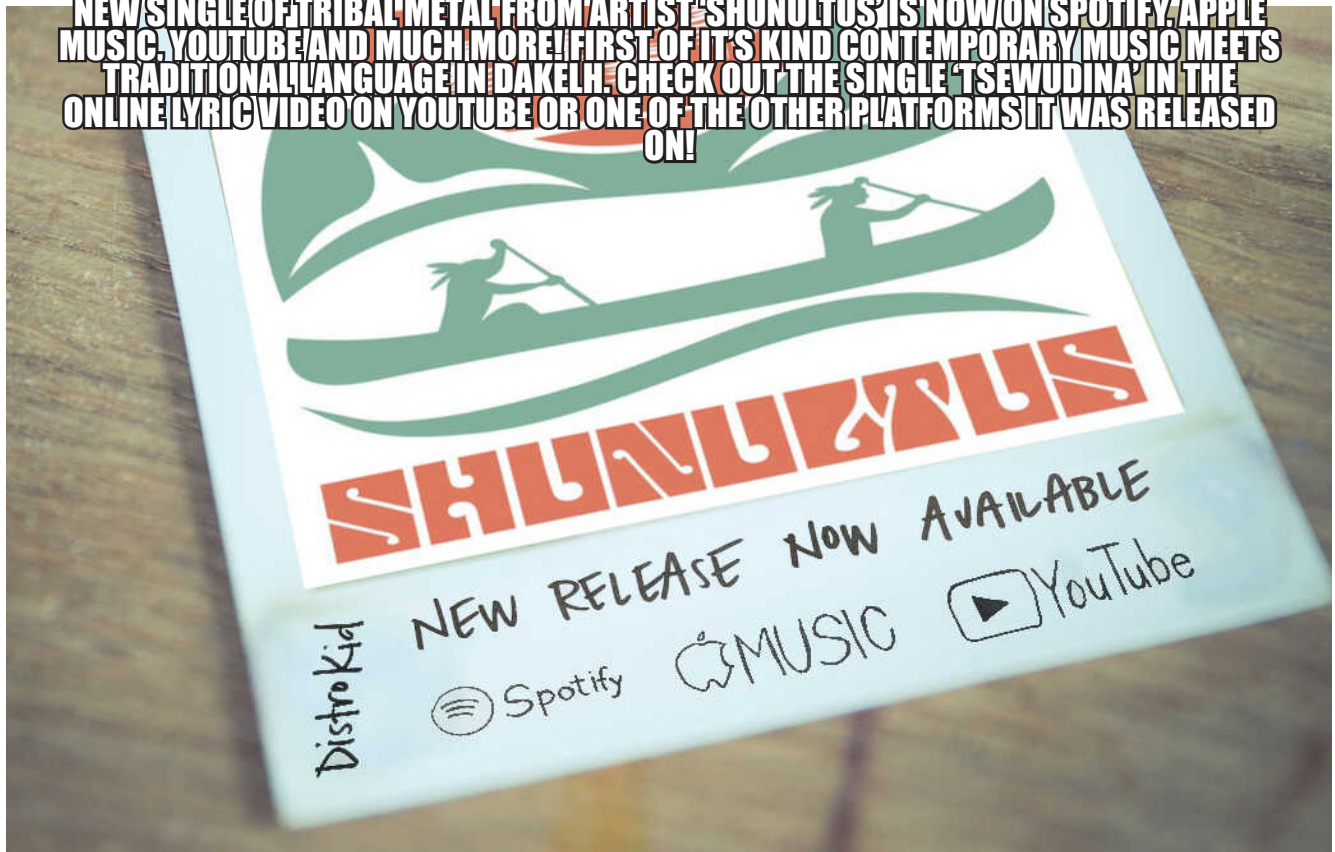
Scokoh Pro
3 subscribers

Subscribed

6 likes, Share, Download, Clip, Save

76 views 8 days ago
 Shunultus is a name my Grandfather gave me meaning 'strong music.'
 It is also a neologism.
 Tsewudina is a place. A big rock in the river that goes way down. My grandfather described it as 'the rock that stands forever.' [Show more](#)

NEW SINGLE OF TRIBAL METAL FROM ARTIST 'SHUNULTUS' IS NOW ON SPOTIFY, APPLE MUSIC, YOUTUBE AND MUCH MORE! FIRST OF ITS KIND CONTEMPORARY MUSIC MEETS TRADITIONAL LANGUAGE IN DAKELH. CHECK OUT THE SINGLE 'TSEWUDINA' IN THE ONLINE LYRIC VIDEO ON YOUTUBE OR ONE OF THE OTHER PLATFORMS IT WAS RELEASED ON!



TRANSLATION

Shunultus is a name my Grandfather gave me meaning ‘strong music’
It is also a neologism.
Tsewudina is a place. A big rock in the river that goes way down. My grandfather described it as ‘the rock that stands forever’
Also a neologism now for artistic purposes.

Lyrical translation for the new single, Tsewudina:

Nadleh si, Nadleh nyun, njan whusahdil
Nadleh me, Nadleh you, here you came

Nadleh si, Nadleh nyun, et whusahdil
Nadleh me, Nadleh you, there you came

Nadleh si, Nadleh nyun, njan whusahdil
Nadleh me, Nadleh you, here you came

Nadleh si, Nadleh nyun, et whusahdil
Nadleh me, Nadleh you, there you came

Nadleh ndi oonduntelhtalh et hukwa whusaindil
Nadleh this, gonna blow it up there, that’s why you came

Nadleh ndi oonduntelhtalh et hukwa whusaindil
Nadleh this, gonna blow it up there, that’s why you came

Nadleh si, Nadleh nyun, njan whusahdil
Nadleh me, Nadleh you, here you came

Nadleh si, Nadleh nyun, et whusahdil
Nadleh me, Nadleh you, there you came

Nadleh si, Nadleh nyun, njan whusahdil
Nadleh me, Nadleh you, here you came

Nadleh si, Nadleh nyun, et whusahdil
Nadleh me, Nadleh you, there you

came

Tat diyunk’ut yatook’ut hughuna
Three times, this land, on the water, they live

Mba usyalh kwun bulh nutsuwulyeh
I’m walking with you playing with fire

Mba usyalh kwun nu dus ah
I’m walking with you bringing the fire

Nadleh nkez ndi kwun cha mba nusghe
Nadleh and this fire too, I’m packing it for you

Nduk tilhu kluk
I’m gonna jump up

Nadleh

Saik’uz

Stella

Nak’azdli

Binche

Takla

Tl’az’ten

All my relations

Shun
Music

Nadleh si, Nadleh nyun, njan whusahdil
Nadleh me, Nadleh you, here you came

Nadleh si, Nadleh nyun, et whusahdil
Nadleh me, Nadleh you, there you came

Nadleh si, Nadleh nyun, njan whusahdil
Nadleh me, Nadleh you, here you came

Nadleh si, Nadleh nyun, et whusahdil

Nadleh me, Nadleh you, there you came

Et naoodezuhl Kale Cho k’una
There through time again, Kale Cho, like him



Et naoodezuhl Nang Gwut k’una
There through time again, Nang Gwut, like him

Et naoodezuhl Ts’esdlol k’una
There through time again, Sasquatch, like him

Naoodezuhl Yoodugi onduk usda
Through time again Jesus Christ is sitting above

Gitxsan

Lillooet

Nee Tahi Buhn

Lheidli

Haida

Anaham

All my relations

Shun
Music

- Johnny Ketlo

**SPECIAL THANKS TO ELEANOR
NOOSKI, DENNIS PATRICK,
ROY NOOSKI, AND VIRGINIA
REYNOLDS FOR HELPING
WITH THE LANGUAGE OF THIS
TRACK.**

Join Our Team

Current openings:

Blackwater Mine

- Chief Surveyor
- Equipment Operator - Earthworks
- Superintendent - Health & Safety
- Manager - Environmental
- Supervisor - Earthworks
- Superintendent - Environment
- Mine Equipment Trainer

Vancouver

- Manager Metallurgy
- VP Legal

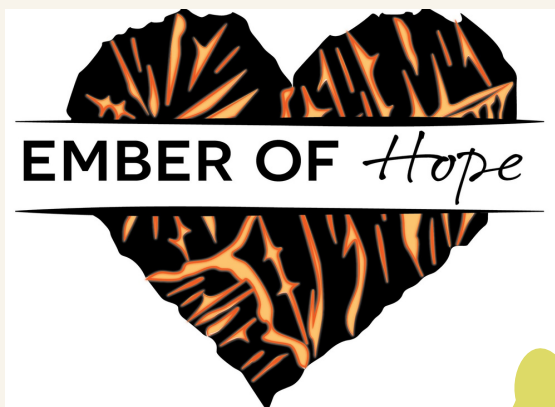
Learn more at artemisgoldinc.com



Healing Grief

THIS GATHERING EQUIPS PARTICIPANTS WITH TOOLS & TECHNIQUES TO LET GO OF UNHELPFUL THOUGHTS, RECONNECT TO EMOTIONS & USE OUR HEARTS TO RECOVER FROM LOSS.

THE EMBER OF HOPE TEAM SUPPORTS PARTICIPANTS IN WORKING THROUGH A BROAD SPECTRUM OF GRIEF & LOSS.



REGISTRATION INFORMATION

WHERE: Best Western Plus, Prince George BC

WHEN: May 23-25, 2023

TIME: 10 AM - 3 PM DAILY

Sponsored By: Prince George Nechako Aboriginal Employment and Training Association (PGNAETA) PRE EMPLOYMENT SUPPORT PROGRAM (PES)

Participants Must be: **18 + on Social Assistance and living on reserve & come from a community that signed an MOU with PGNAETA.** Funding supports include: hotel, travel, meals and if necessary child care costs.

If a participant is from another reserve: Hotel, Travel, Meals and child care costs will be provided by Bands and PGNAETA

*Babysitter for children must be 18 years or older

For funding support: contact Carlin Haines carlinh@PGNAETA.bc.ca or Georgia Hoedt GeorgiaH@PGNAETA.bc.ca or by calling 250-561-1199

Application form to attend Healing Grief can be found at:

<https://forms.gle/E94RhoUp2VxbF6Vr5>

REMINDER

The Musqueam / UBC GPR team is offering a
**Ground Penetrating Radar (GPR) Course
for Indigenous Communities**

hosted by the
University of BC (UBC)
and the
Musqueam Indian Band (x^wməθk^wəyəm)

**June 12th - 16th in Vancouver and
June 19th - 23rd online**

Space is limited!

Travel, accommodation & meals will be covered for at least 1 representative from
each Lead Community for the in-person portion of the training

If you are interested please contact:

Terry Luggi, IRS Project Manager

tluggi@nadleh.ca

(250) 690 – 7211 extension 105

(236) 331 – 5836 (mobile)

by 4:30 pm Monday May 29th

Nadleh Whut'en is a Lead Community



Community Bulletin: Nadleh Garbage Notice

Attention residents of Nadleh community! We would like to remind everyone to cooperate with our garbage disposal guidelines to maintain a clean and healthy environment for all of us.

Please ensure that all garbage is placed inside garbage bags only. Loose containers, McDonald's bags, Tim Hortons bags, and cardboard boxes should not be disposed of in this manner. Batteries, tires, and other hazardous materials should also be disposed of properly and not included in the garbage bags.

If you have cat litter, please double bag it to prevent any spills or odors. Remember, anything that fits inside a garbage bag is acceptable as long as it is securely sealed in the bag.

For larger items such as mattresses or other materials that cannot fit in a garbage bag, please contact our Maintenance Men in advance so that they can arrange for proper disposal.

Let us work together to keep our community clean and healthy. Thank you for your cooperation, from the Maintenance team.

Notice to Parents

Summer Student Employment 2023

If your child is planning to work as a summer student this year, parents need to ensure that their child has the following in place before the job starts.

Your child needs to have:

- **Social Insurance Number**
(without a SIN # your child will not be able to start work)
- **Bank Account (for direct deposit purposes)**
- **Email Address**

Work normally starts in early July



NADLEH WHUT'EN

RECREATION COORDINATOR

Job Posting

The Recreation Coordinator develops and implements recreation/exercise programming for the Nadleh Whut'en community. The incumbent creates and delivers a dynamic schedule of events and activities for members of all ages to maintain and improve their health.

Key Duties & Responsibilities:

- Coordinates the schedule of recreational activities and events targeting all groups within the NWFN community (i.e., children, parents, youth, elders, members with disabilities)
- Seeks out funding opportunities for new and existing programs and with approval from the CHR, submits proposals
- Maintains equipment inventory and ensures equipment maintenance requirements are met
- Develops and communicates a program schedule of clinics, gym activities, team sports, special events, and field trips
- Assumes responsibility for the day-to-day operation of the recreation facility and equipment

Skills & Qualifications:

- Post-secondary certificate in Recreation, Physical Education, Sports Management or other related field is an asset
- 1 year of experience working in a recreation role
- Experience working with or within an Indigenous community.
- Satisfactory Criminal Record Check.
- Valid certificate in Level 1 First Aid and CPR
- Valid B.C. Class 5 Driver's License and clear driver's abstract.
- Excellent client service skills. Friendly, positive, responsive, professional and helpful.
- Ability to design, deliver and assess effective recreation programming for people of all ages.
- Physical fitness at a level to lead various sports and recreational activities.
- Ability to promote and market programs and events to maximize participation.
- Able to work independently with minimal day-to-day supervision as well as working within a collaborative team framework.
- Ability to facilitate group activities as well as working with individuals one to one
- Basic to intermediate computer skills including MS Office.

Position open until filled

***Applicants will be shortlisted according to prior work history and qualifications.**

Only those selected for an interview will be notified*

Preference will be given to band members if qualified.

Please submit resume with cover letter to: kgeorge@nadleh.ca

